

10 rows. Bind off all sts.

Eyes: With AC, make French knots on white sheep for eyes where indicated on chart. Use CC for black sheep.

Neckband: Sew shoulder seams. With circular needles and rs facing, with MC, k 64 (68) sts from back holder; pick up and k 39 (40) sts along left neck edge; k 26 (28) sts from front holder; pick up and k 39 (40) sts along right neck edge, 168 (176) sts. Work in k 2, p 2 rib for 1". Bind off loosely.

Finishing: Mark front and back for armhole 7 (7½)" down from shoulders. Sew sleeves to front and back between markers. Sew side and sleeve seams. Insert shoulder pads.

LLAMA SAMPLER SWEATER (see page 75)



SIZE: Directions are for size Medium. Finished garment measures 38" at bust. Sleeve length to armhole: 17½"

MATERIALS: Brunswick Yarns: Germantown (100-gr balls), 3 balls #4151 calypso pink (A), 1 ball each of #4242 primary blue (B), #422 garnet (C), #425 maroon (D), #483 chamois heather (E), #400 white (F), #4083 medium sunflower (G), #4271 lime (H), #4272 medium lime (I), #460 black (J), #4124 medium copen blue (K), #4131 bright navy (L). One pair each size 3 and size 5 knitting needles, or size needed to obtain gauge.

GAUGE: 5 sts = 1"; 6 rows = 1". To save time, take time to check gauge.

Note: This garment can be effectively made with leftover yarns of corresponding color tones, provided you can obtain proper gauge. A selvage st at each end of row has been calculated into entire pat. This allows for seams. On all charts, carry yarn in back. Any length adjustment should be worked right after rib.

BACK: Cast on 98 sts in color A on smaller needles. Work in k 2, p 2 rib for 3". Change to larger needles and work body in St st.

Row 1-6: color A

7-14: pat, chart #1, color B

Bottom stripes: (rows 15-34)

Row 15-16: color B

17-18: color C

19-20: color D

21-22: color A

23-24: color E

25-26: color F

27-28: color G

29-30: color H

31-32: color I

33-34: color J

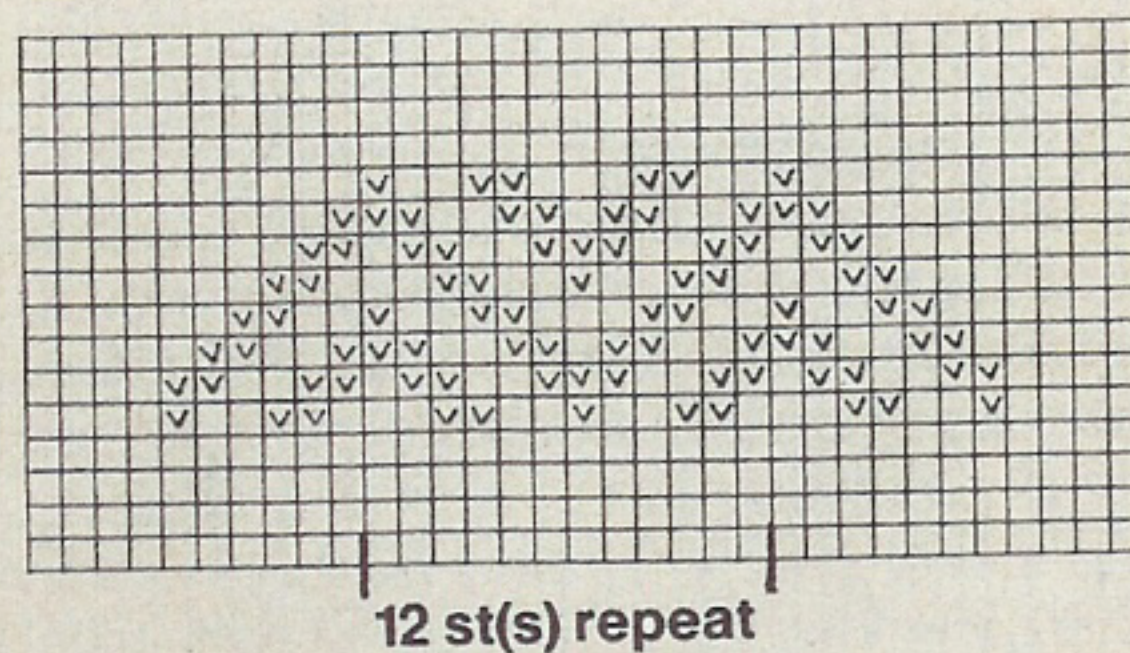
Rows 35-37: color A

38-51: pat, chart #2

52-55: color A

LLAMA SWEATER

CHART 1

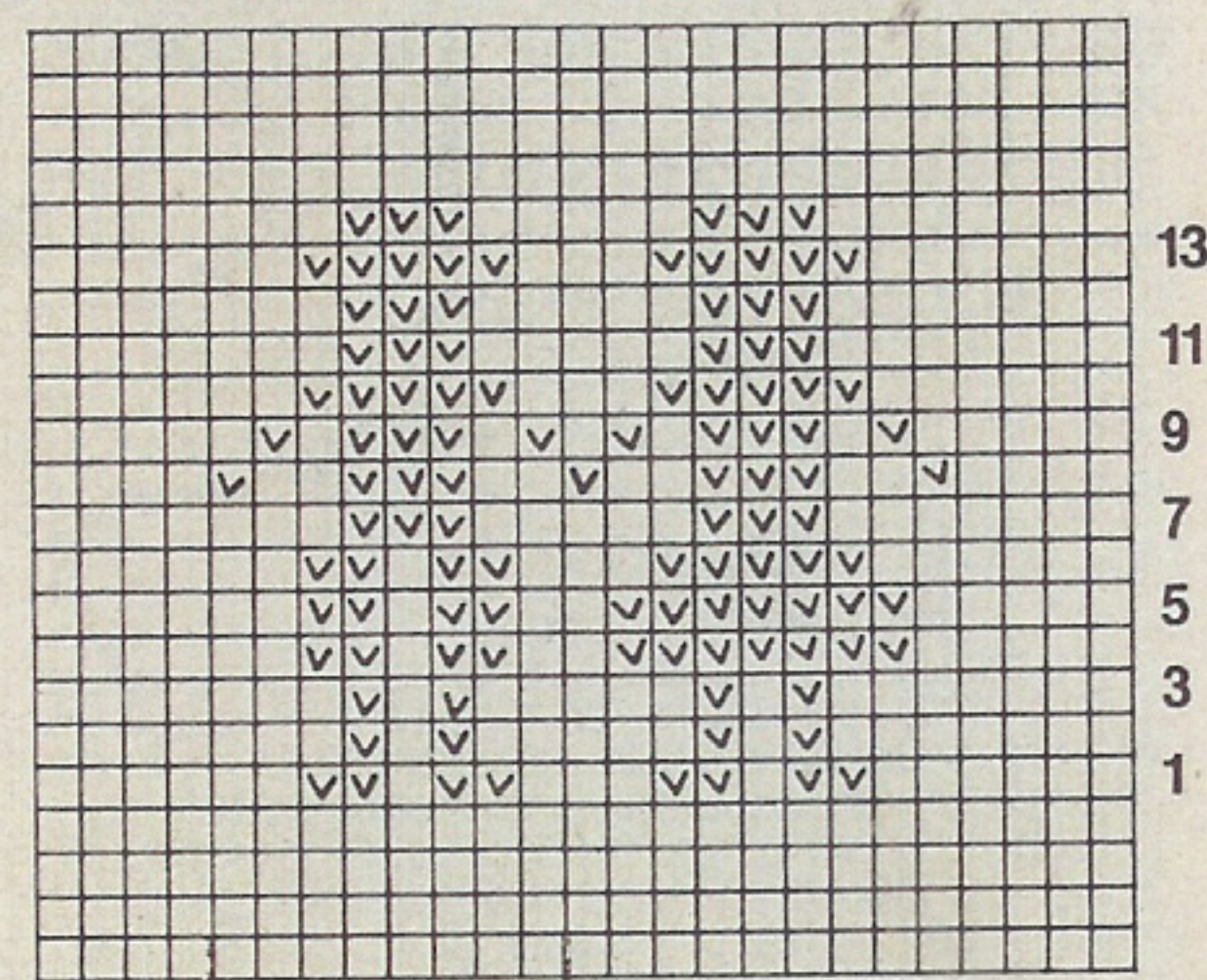


Key

Background = Color A

V = Color B or J (as per directions)

CHART 2



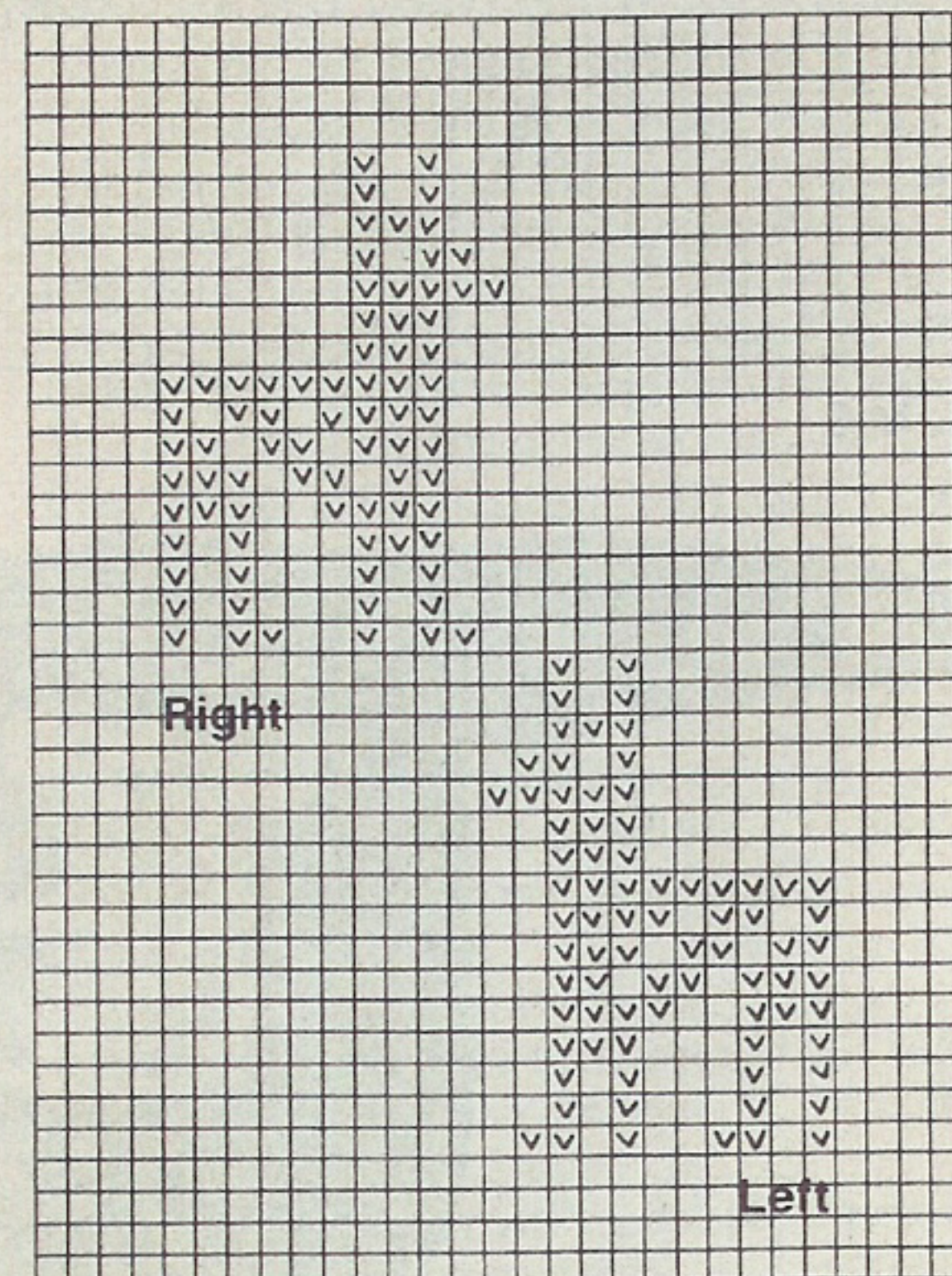
Key

Background = Color A

V

- Rows 13, 14 = Color L
- Rows 11, 12 = Color E
- Rows 8, 9, 10 = Color K
- Rows 5, 6, 7 = Color J
- Row 4 = Color F
- Rows 1, 2, 3 = Color E

CHART 3



Key

Background = Color A

V = Color F

56-63: chart #1 (color J)

Middle stripes: (Rows 64-83)

64-65: color J

66-67: color C

68-69: color D

70-71: color A

72-73: color E

74-75: color F

76-77: color G

78-79: color H

80-81: color I

82-83: color J

K row 84 in color A. Beg armhole dec. Bind off 4 sts at beg of next 2 rows and 1 st at beg of next 8 rows (total of 8 sts each edge), while cont in pat.

Rows 84-86: color A

87-102: pat, chart #3, llamas facing each other (beg llama 10 sts from armhole edge on each side)

103-105: color A

Top stripes: (Rows 106-125)

106-107: color J

108-109: color I

110-111: color H

112-113: color G

114-115: color F

116-117: color E

118-119: color A

120-121: color D

122-123: color C

124-125: color J

Work one k row color A. Beg shoulder shaping: Bind off 10 sts from each shoulder edge 2 times, then bind off rem sts (bind-off covers 5 rows).

FRONT: Work front same as back to armhole.

Armhole: K row 84 in color A. Bind off 6 sts at beg of rows 85 and 86. Cont in pat, then bind off 1 st at beg of next 10 rows (total of 11 sts each edge). At the same time, beg V-neck shaping: Divide work. For right front, bind off 1 st at V neck every other row 17 times (over 34 rows). Then work even to top. (Using "right" side of Chart #3, beg llama 9 sts from armhole edge. Work stripes same as for back.) Bind off as for back. Work left front same way, using "left" side of Chart #3 beg llama 9 sts from armhole edge.

SLEEVE: Cast on 46 sts in color A on smaller needles. Work in k 2, p 2 rib for 2½". Change to larger needles. Inc 1 st each end of row in rows marked with asterisk (*).

Row 1: color A *(inc)

2-5: color A

6: color A *(inc)

7-12: color A

13-20: chart #1 (color B)

21-40: stripes same as bottom back

*(incs worked on rows 23, 29, 35)

41-43: color A *(incs row 41)

44-57: chart #2 beg 2 sts in from selvage st *(incs row 55)

58-60: color A *(incs row 59)

There are now 62 sts on needle.

61-68: chart #1 (color J)

69-88: work stripes same as middle back *(incs rows 71, 79)

89: Color A

Right sleeve: Cont with color A; bind off 6 sts at beg of row 90 and 4 sts at beg of row 91. Dec 1 st at beg of every row until there are 18 sts left. Bind off.

Left sleeve: Bind off 4 sts at beg of row 90 and 6 sts beg of row 91. Proceed as for right sleeve.

continued